

CHEVALIA

ESTATE 2

Grand Polo Club & Resort

Permit No.: 1375987026



GRAND POLO

CLUB & RESORT

Grand Polo Club & Resort is a masterplan which is built to strike fine balance between lifestyle principles of leisure, nature, connectivity, wellness and recreation

Whilst having the equestrian prestige at its heart, the green spaces loop-around and branch-out across the masterplan, connecting the residences thereby fostering a sense of community and belonging.



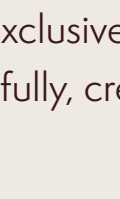
GRANDEUR ESTATE LIVING, INSPIRED BY EQUESTRIAN LEGACY

A majestic ode to equestrian heritage, Chevalia Estate 2 welcomes you with grand drives, lush landscapes, and luxury villas, surrounding The Clubhouse, The Stables, and picturesque linear park — embodying a timeless estate living.

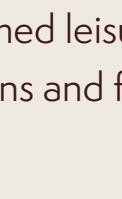


THE GREEN CORE

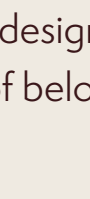
Situated in the heart of the masterplan, the Green Core is placed to serve a dual-purpose – to enhance the aesthetic appeal and promote a sense of community and connection to nature. Comprising of three Polo Fields, a luxurious Clubhouse and private Stables, this is the primary vista that the residents of Chevalia Estate will wake up to.



The Clubhouse



The Polo Fields



The Stables

HERITAGE & LUXURIES IN EVERY DIRECTION

A world of curated moments awaits, from tranquil green retreats and wellness escapes to exclusive equestrian-themed leisure. A community designed for living beautifully, creating connections and feeling the sense of belonging.



ELEGANCE OF QUINTESSENTIAL LIVING

Discover 4 and 5-bedroom villas, designed with luxury in every detail. Spaces that celebrate the grace of equestrian opulence, with experiences inspired by the free spirit of horses.



WELLNESS, LEISURE AND EQUINE EXPERIENCES



The Clubhouse



The Stables



Riding Arenas



Expansive Linear Park

UNIT DETAILS

| Type | Units | Avg. BUA (sq. ft.) | Avg. Plot Area (sq. ft.) | Starting Price (AED Million) |
|-------------------------|-------|--------------------|--------------------------|------------------------------|
| 4 Bed Luxury | 74 | 4,168 | 5,794 | 7.88 Mn |
| 5 Bed Ultra Luxury | 24 | 5,046 | 6,057 | 10.03 Mn |
| 5 Bed Equestrian Luxury | 22 | 8,635 | 9,149 | 17.61 Mn |



PAYMENT PLAN

| Payment Plan | Payment Percentage | Date |
|--|--------------------|------------|
| Down Payment | 10% | On Booking |
| 1st Instalment | 10% | NOV 2025 |
| 2nd Instalment | 10% | MAY 2026 |
| 3rd Instalment | 10% | NOV 2026 |
| 4th Instalment 30% Construction Completion | 10% | MAY 2027 |
| 5th Instalment 50% Construction Completion | 10% | OCT 2027 |
| 6th Instalment 70% Construction Completion | 10% | FEB 2028 |
| 7th Instalment 90% Construction Completion | 10% | AUG 2028 |
| 8th Instalment 100% Construction Completion | 20% | JUN 2029 |

TYPICAL FLOOR PLANS

4 BEDROOM LUXURY VILLAS



GROUND FLOOR



FIRST FLOOR



SECOND FLOOR

5 BEDROOM LUXURY VILLAS



GROUND FLOOR



FIRST FLOOR



SECOND FLOOR

5 BEDROOM EQUESTRIAN LUXURY VILLAS



GROUND FLOOR



FIRST FLOOR



SECOND FLOOR