

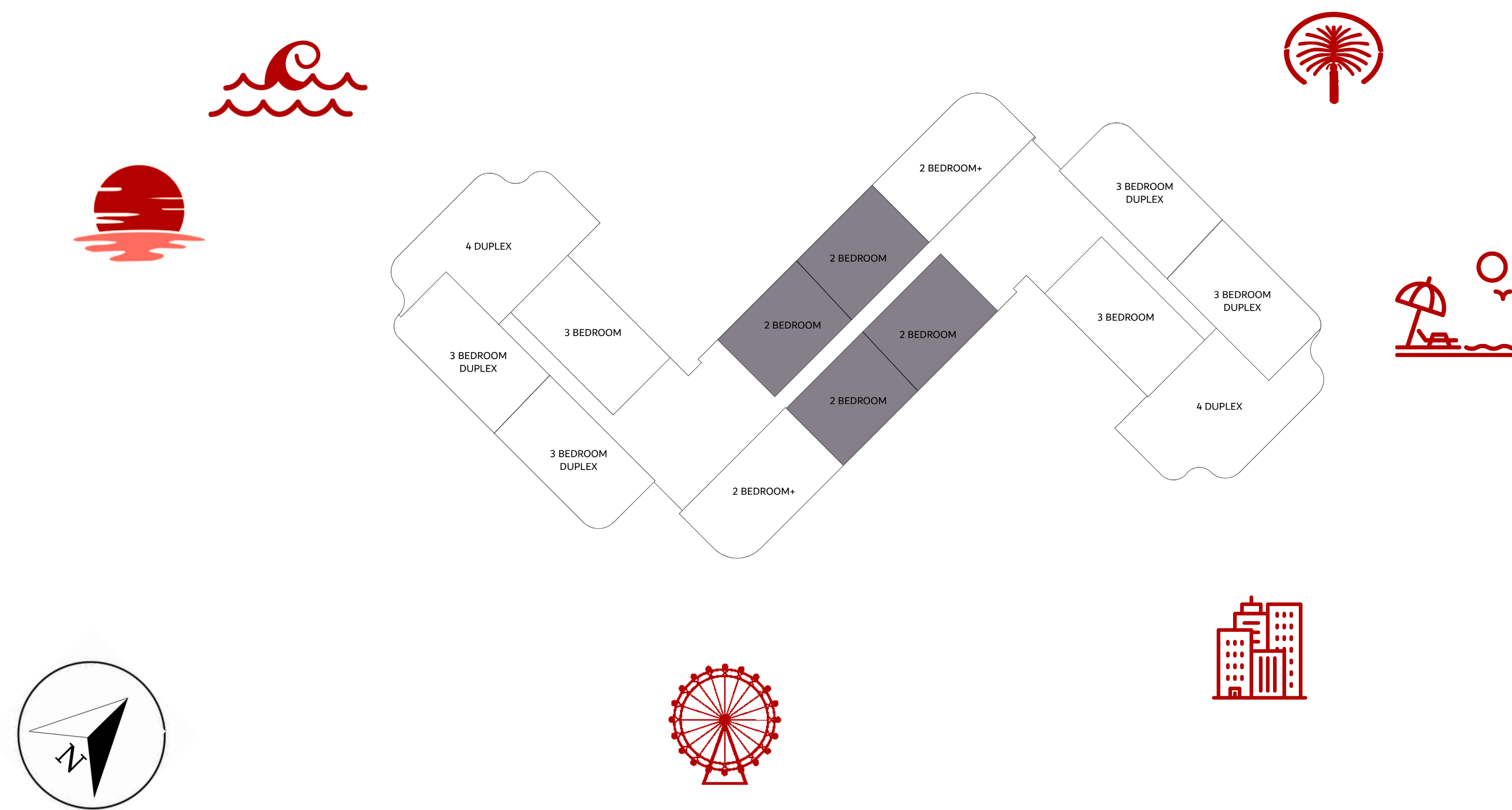
SLS

RESIDENCES
THE PALM DUBAI

2 BEDROOM TYPE 1

SUITE AREA	131.77 M2	1,418.00 SQFT
BALCONY AREA	23.78 M2	256.00 SQFT
TOTAL SELLABLE AREA	155.55 M2	1,674.00 SQFT

KEYPLAN
(GROUND FLOOR - 1ST - 2ND -
3RD - 4TH -5TH - 6TH - 7TH - 8TH)



FLOOR PLAN 1. All dimensions are in imperial and metric, and measured from finish to finish excluding construction tolerances. 2. All materials, dimensions, and drawings are approximate only. 3. Information is subject to change without notice, at developer's absolute discretion. 4. Actual area may vary from the stated area. 5. Drawings not to scale. 6. All images used are for illustrative purposes only and do not represent the actual size, features, specifications, fittings, and furnishings. 7. The developer reserves the right to make revisions / alterations, at it's absolute discretion, without any liability whatsoever.

SLS

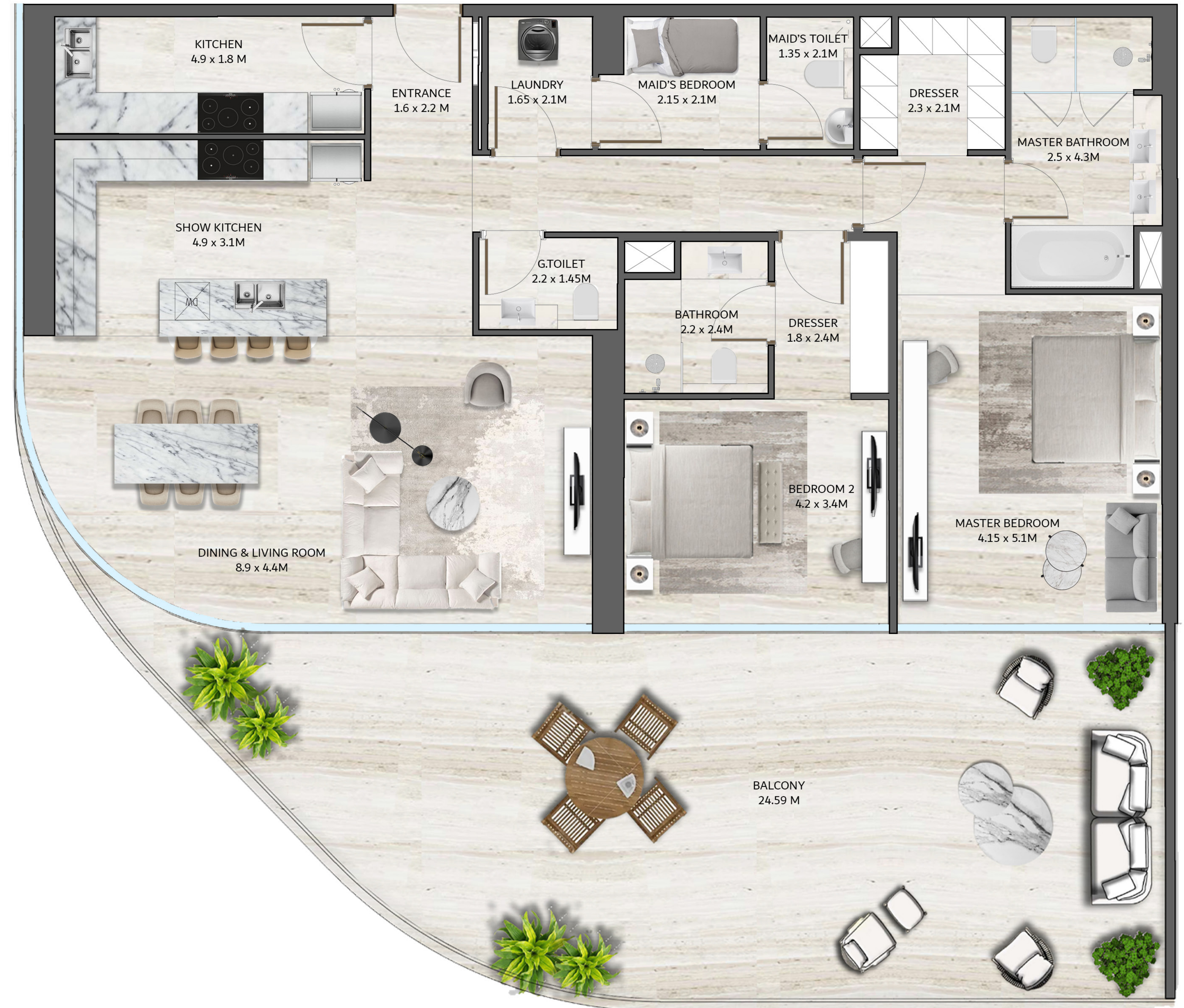
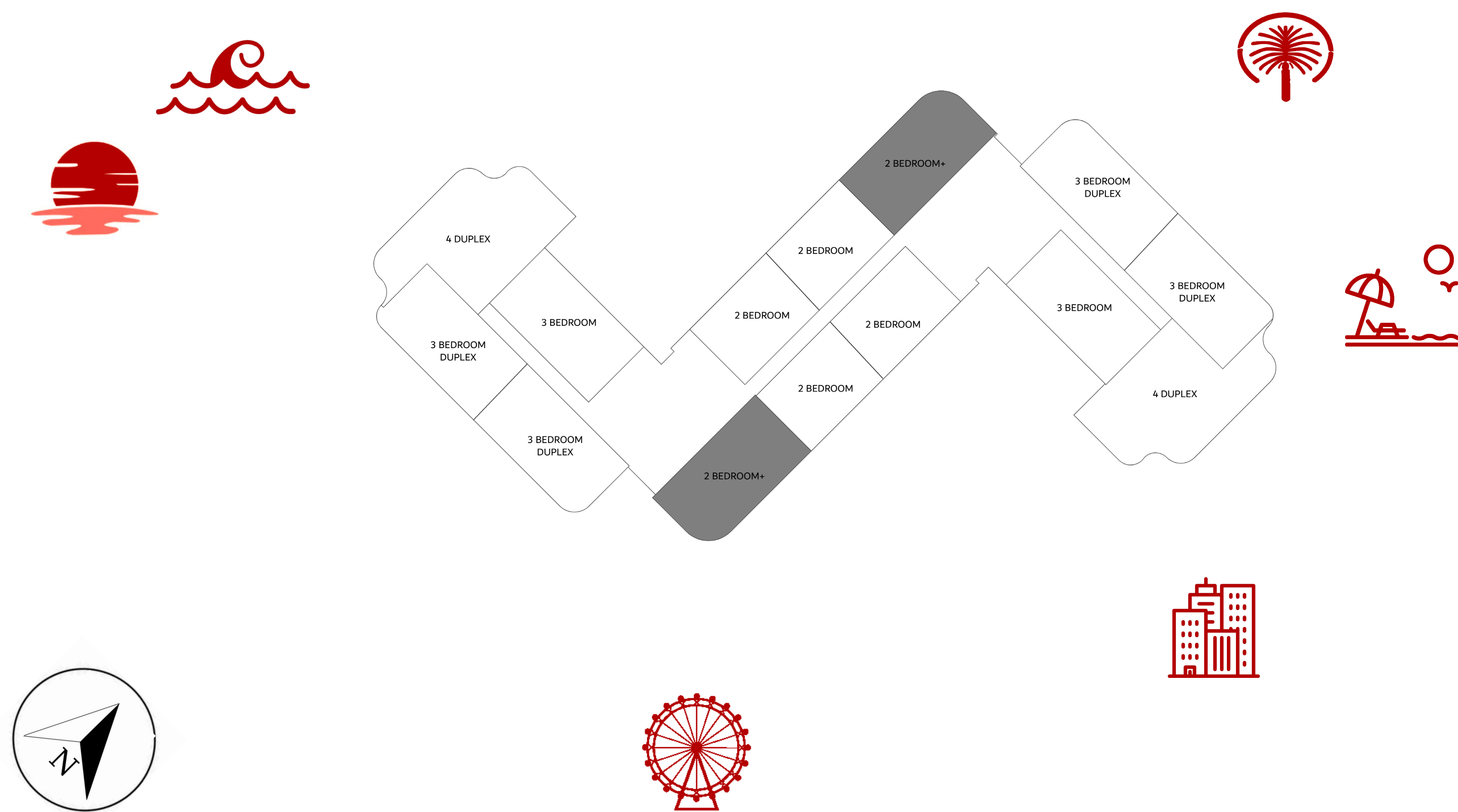
RESIDENCES
THE PALM DUBAI

2 BEDROOM TYPE 2

SUITE AREA	163.75 M2	1,763.00 SQFT
BALCONY AREA	24.59 M2	265.00 SQFT
TOTAL SELLABLE AREA	188.34 M2	2,027.00 SQFT

KEYPLAN

(GROUND FLOOR - 1ST - 2ND -
3RD - 4TH - 5TH - 6TH - 7TH - 8TH)



FLOOR PLAN 1. All dimensions are in imperial and metric, and measured from finish to finish excluding construction tolerances. 2. All materials, dimensions, and drawings are approximate only. 3. Information is subject to change without notice, at developer's absolute discretion. 4. Actual area may vary from the stated area. 5. Drawings not to scale. 6. All images used are for illustrative purposes only and do not represent the actual size, features, specifications, fittings, and furnishings. 7. The developer reserves the right to make revisions / alterations, at it's absolute discretion, without any liability whatsoever.

SLS

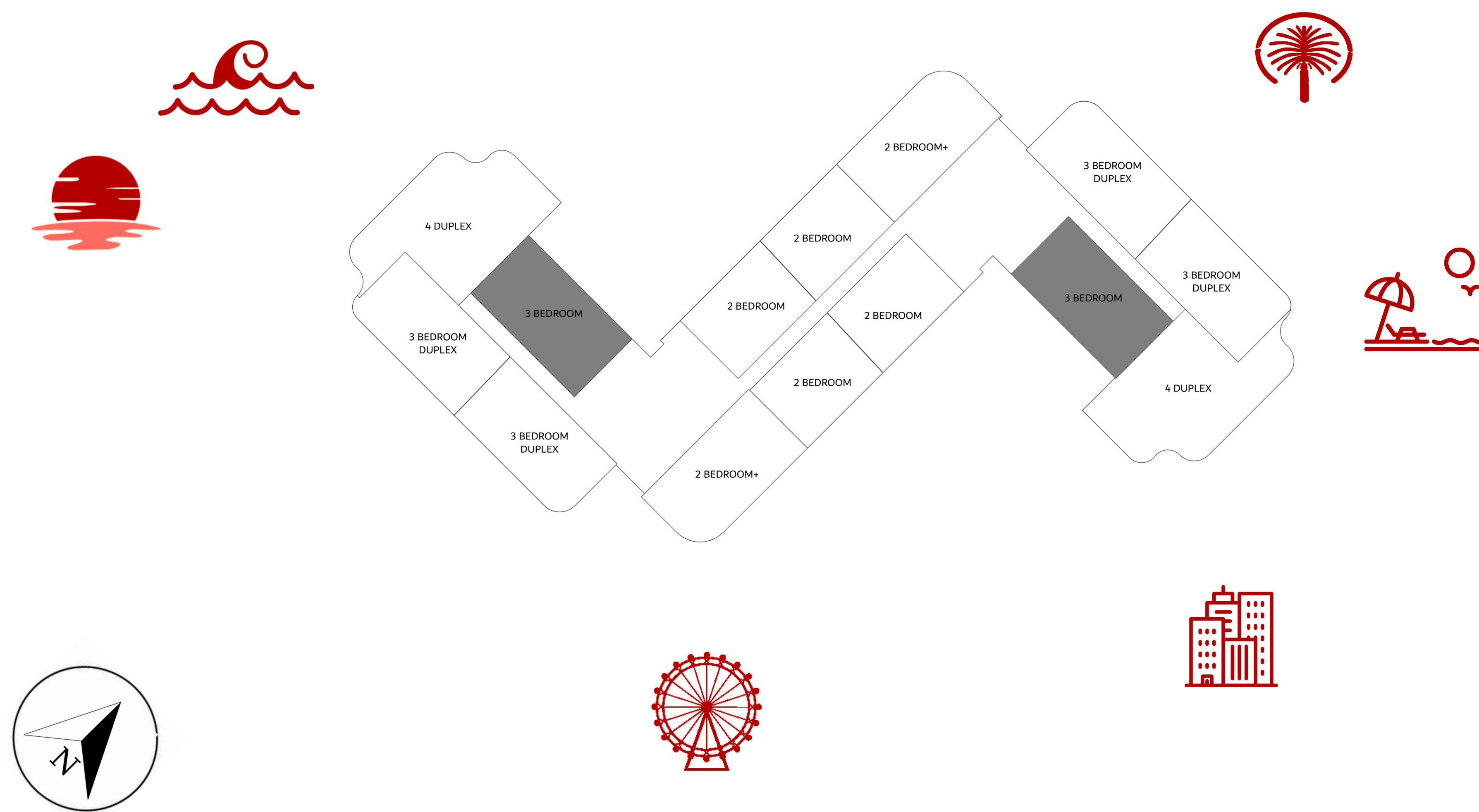
RESIDENCES
THE PALM DUBAI

3 BEDROOM TYPE 1

SUITE AREA	174.53 M2	1,879.00 SQFT
BALCONY AREA	54.17 M2	583.08 SQFT
TOTAL SELLABLE AREA	228.7 M2	2,462.00 SQFT

KEYPLAN

(GROUND FLOOR - 1ST - 2ND -
3RD - 4TH -5TH - 6TH - 7TH - 8TH)



FLOOR PLAN 1. All dimensions are in imperial and metric, and measured from finish to finish excluding construction tolerances. 2. All materials, dimensions, and drawings are approximate only. 3. Information is subject to change without notice, at developer's absolute discretion. 4. Actual area may vary from the stated area. 5. Drawings not to scale. 6. All images used are for illustrative purposes only and do not represent the actual size, features, specifications, fittings, and furnishings. 7. The developer reserves the right to make revisions / alterations, at it's absolute discretion, without any liability whatsoever.

SLS

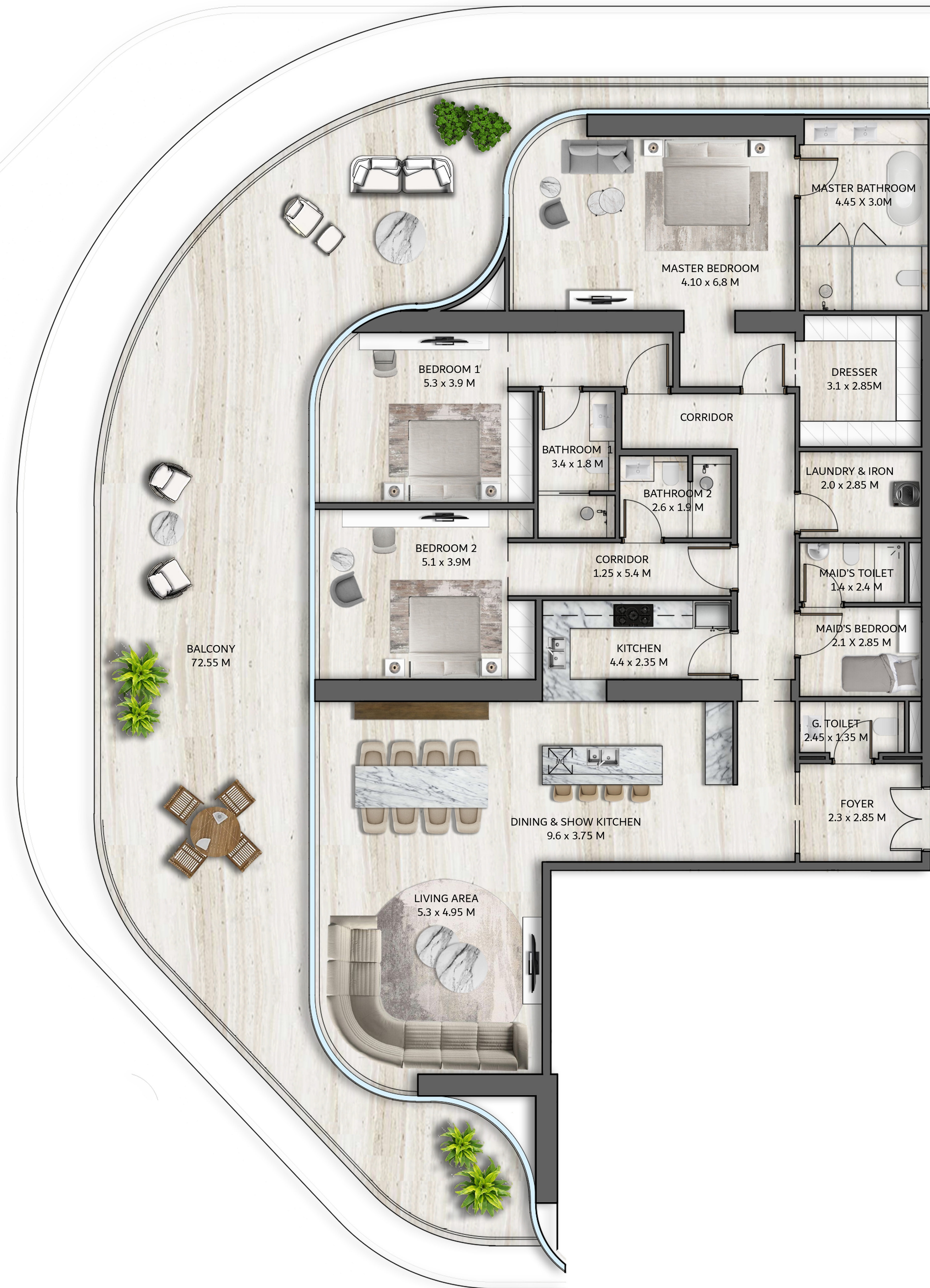
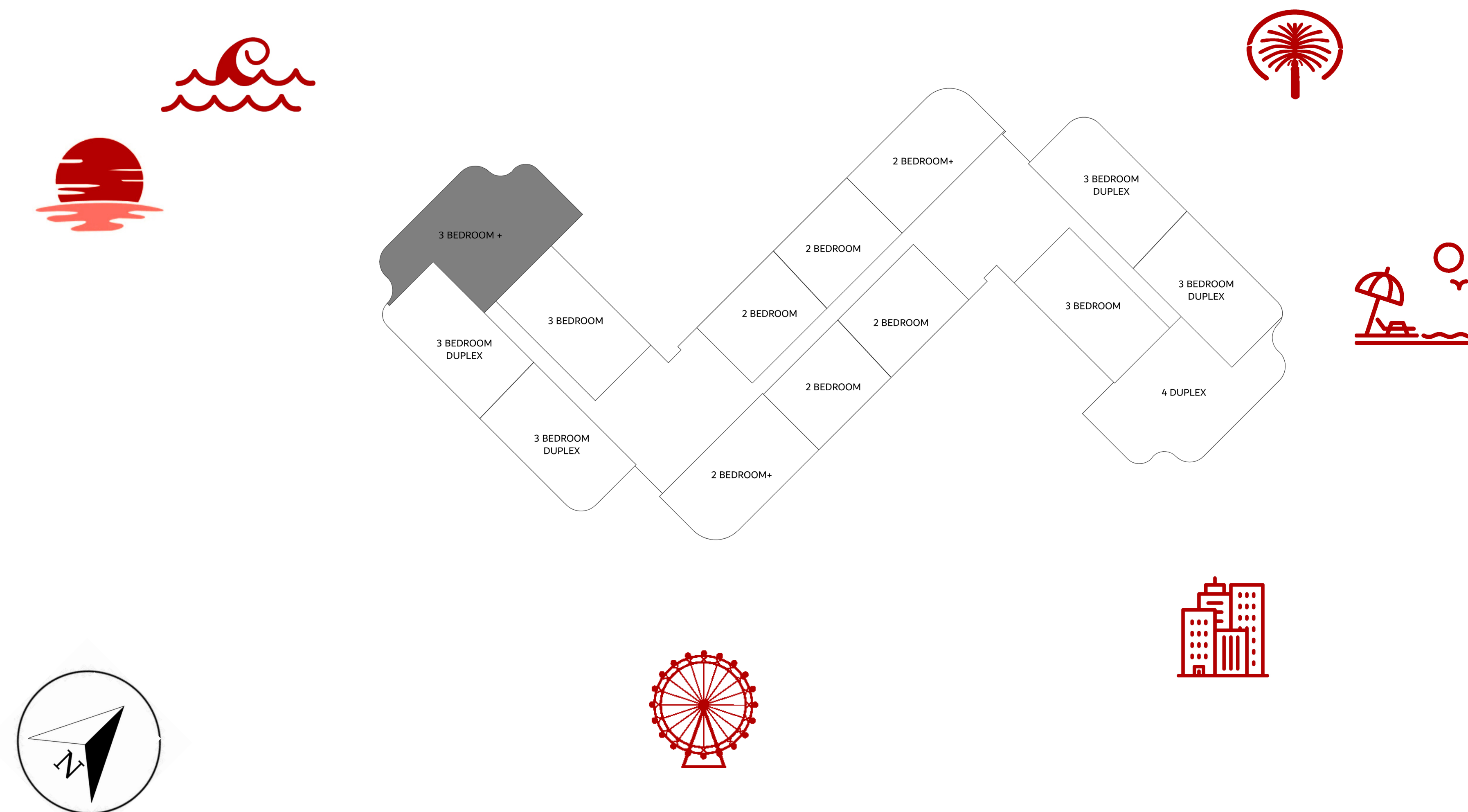
RESIDENCES
THE PALM DUBAI

3 BEDROOM TYPE 2

SUITE AREA	257.84 M2	2,775.00 SQFT
BALCONY AREA	72.55 M2	780.92 SQFT
TOTAL SELLABLE AREA	330.39 M2	3,555.92 SQFT

KEYPLAN

(GROUND FLOOR - 1ST FLOOR)



FLOOR PLAN 1. All dimensions are in imperial and metric, and measured from finish to finish excluding construction tolerances. 2. All materials, dimensions, and drawings are approximate only. 3. Information is subject to change without notice, at developer's absolute discretion. 4. Actual area may vary from the stated area. 5. Drawings not to scale. 6. All images used are for illustrative purposes only and do not represent the actual size, features, specifications, fittings, and furnishings. 7. The developer reserves the right to make revisions / alterations, at it's absolute discretion, without any liability whatsoever.

SLS

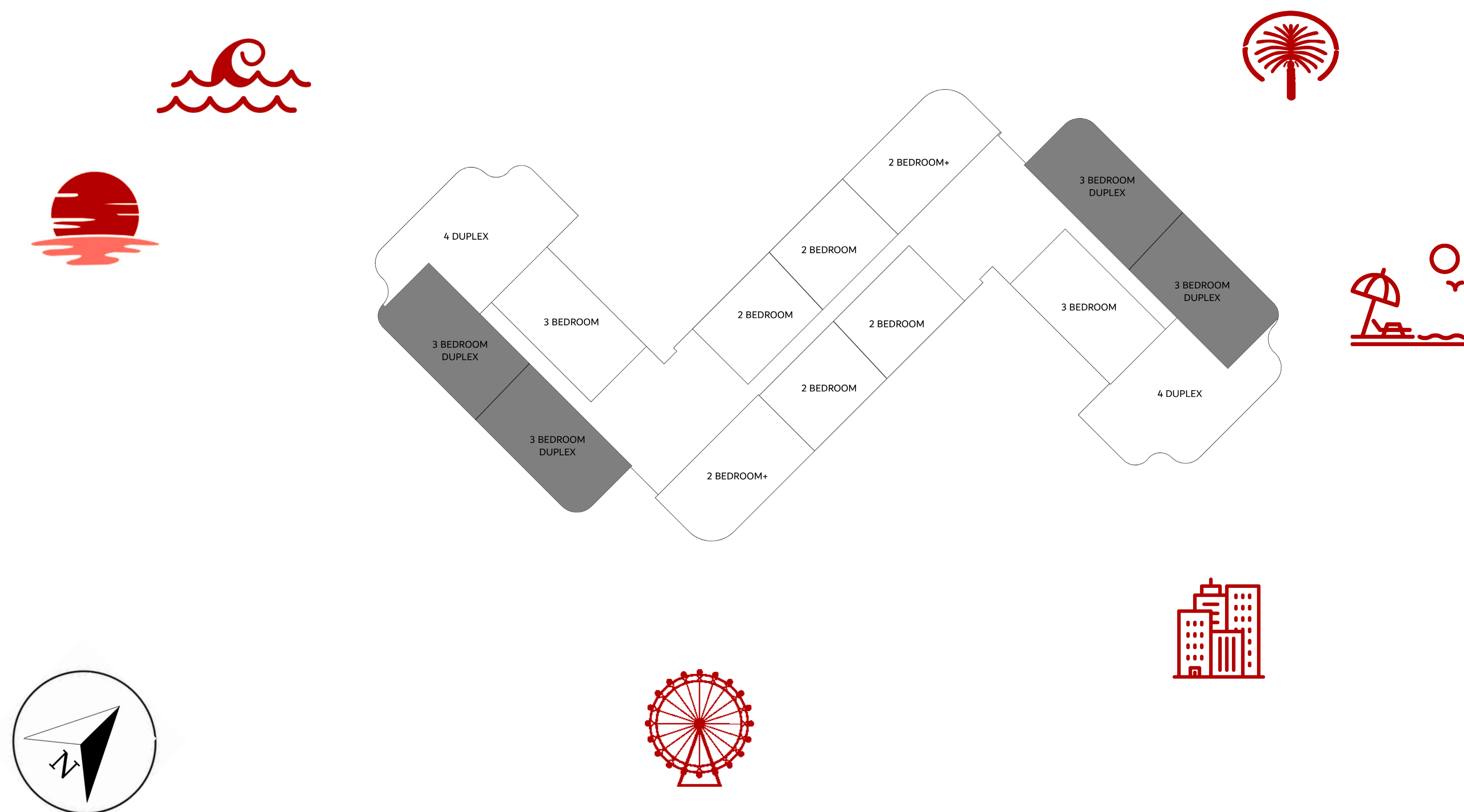
RESIDENCES
THE PALM DUBAI

3 BEDROOM DUPLEX

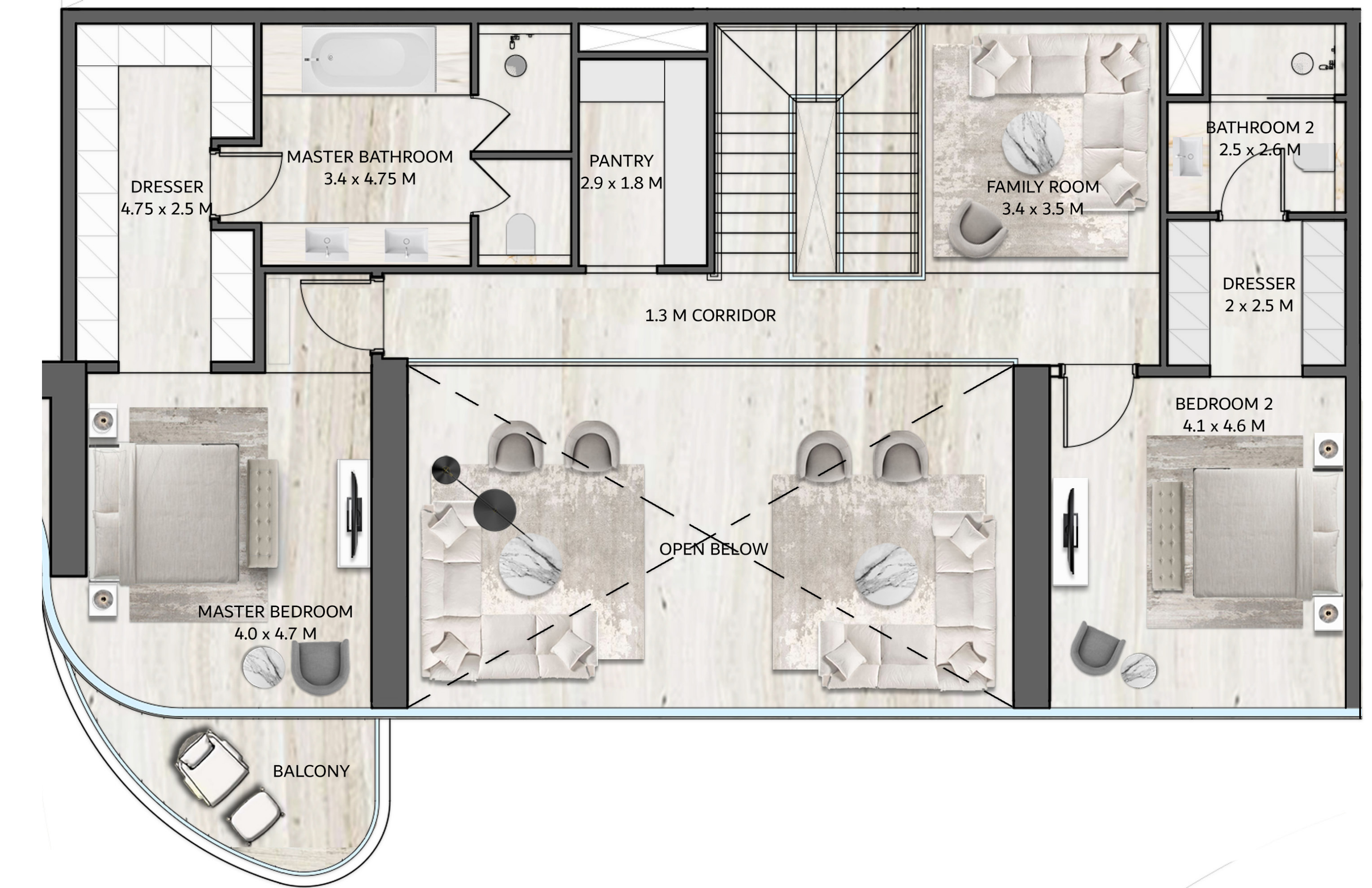
SUITE AREA	303.72 M2	3,269.00 SQFT
BALCONY AREA	86.8 M2	934.00 SQFT
TOTAL SELLABLE AREA	390.52 M2	4,204.00 SQFT

KEYPLAN

(2ND - 4TH - 6TH - 8TH)



LOWER LEVEL



UPPER LEVEL

FLOOR PLAN 1. All dimensions are in imperial and metric, and measured from finish to finish excluding construction tolerances. 2. All materials, dimensions, and drawings are approximate only. 3. Information is subject to change without notice, at developer's absolute discretion. 4. Actual area may vary from the stated area. 5. Drawings not to scale. 6. All images used are for illustrative purposes only and do not represent the actual size, features, specifications, fittings, and furnishings. 7. The developer reserves the right to make revisions / alterations, at it's absolute discretion, without any liability whatsoever.

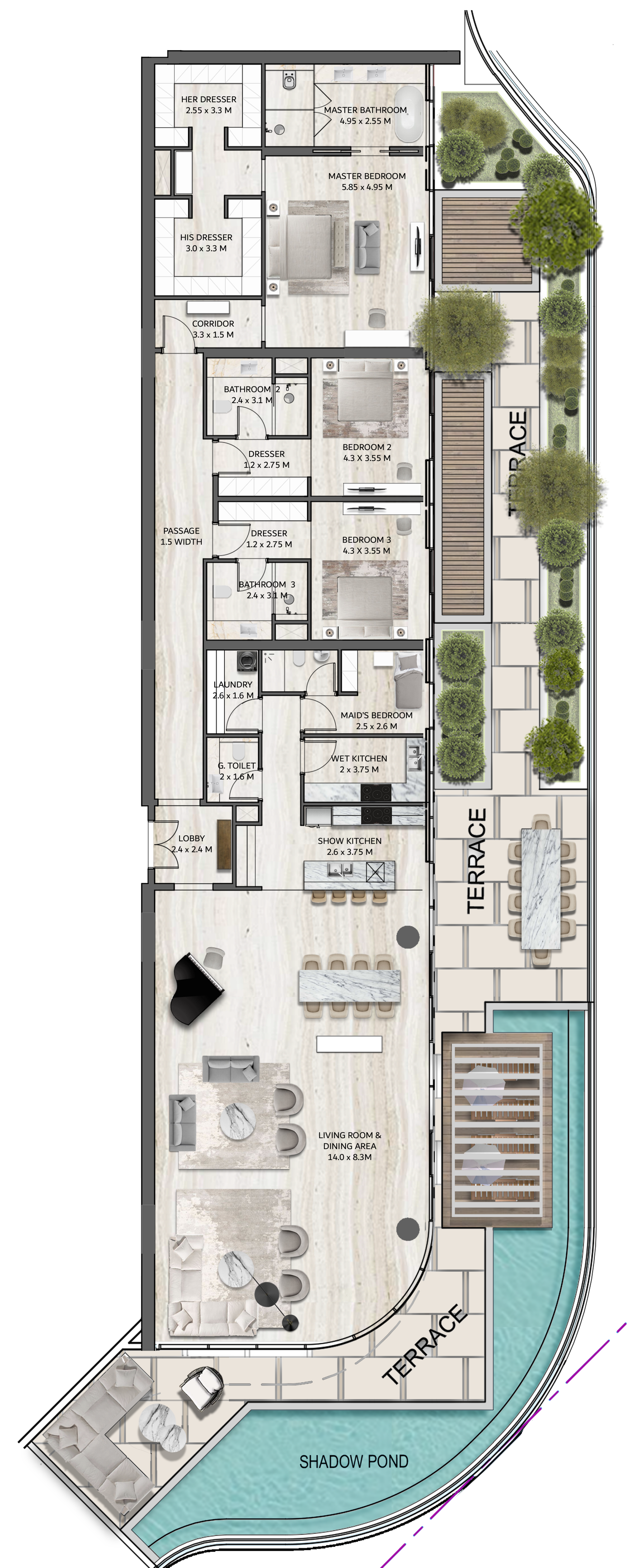
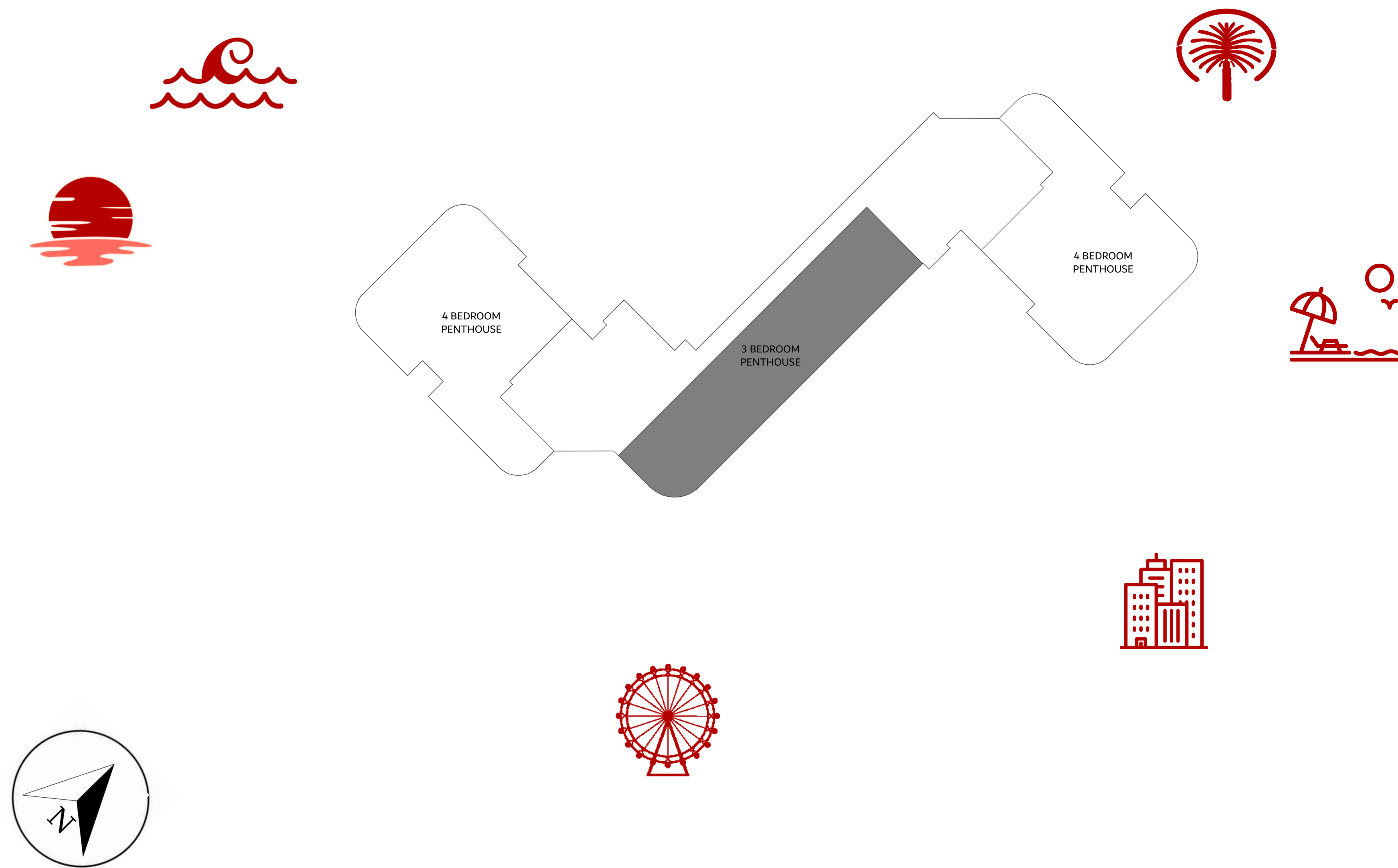
SLS

RESIDENCES
THE PALM DUBAI

3 BEDROOM PENTHOUSE

SUITE AREA	341.95 M2	3,681.00 SQFT
BALCONY AREA	269.49 M2	2,900.00 SQFT
TOTAL SELLABLE AREA	611.44 M2	6,581.00 SQFT

KEYPLAN (ROOF FLOOR)



FLOOR PLAN 1. All dimensions are in imperial and metric, and measured from finish to finish excluding construction tolerances. 2. All materials, dimensions, and drawings are approximate only. 3. Information is subject to change without notice, at developer's absolute discretion. 4. Actual area may vary from the stated area. 5. Drawings not to scale. 6. All images used are for illustrative purposes only and do not represent the actual size, features, specifications, fittings, and furnishings. 7. The developer reserves the right to make revisions / alterations, at it's absolute discretion, without any liability whatsoever.

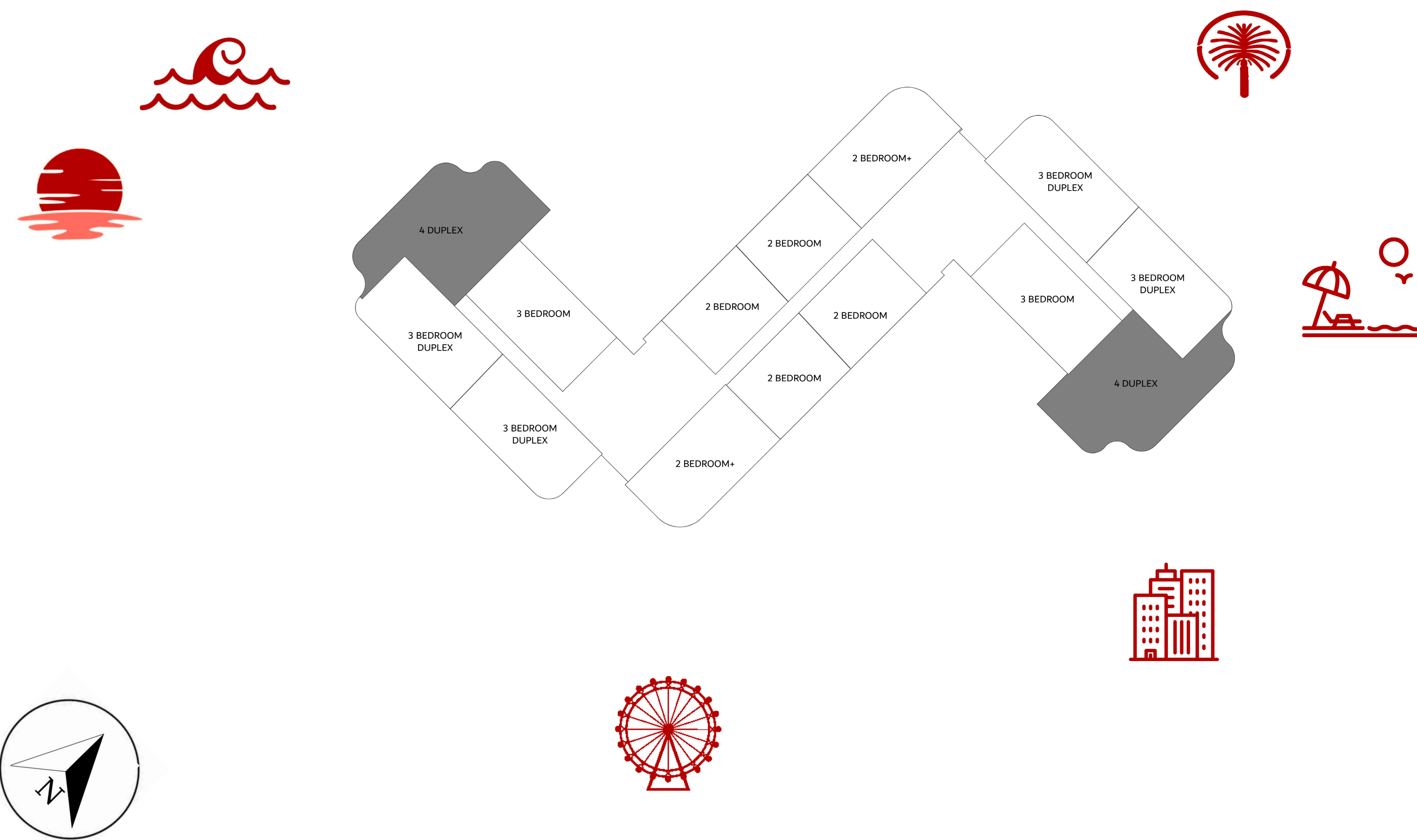
SLS

RESIDENCES
THE PALM DUBAI

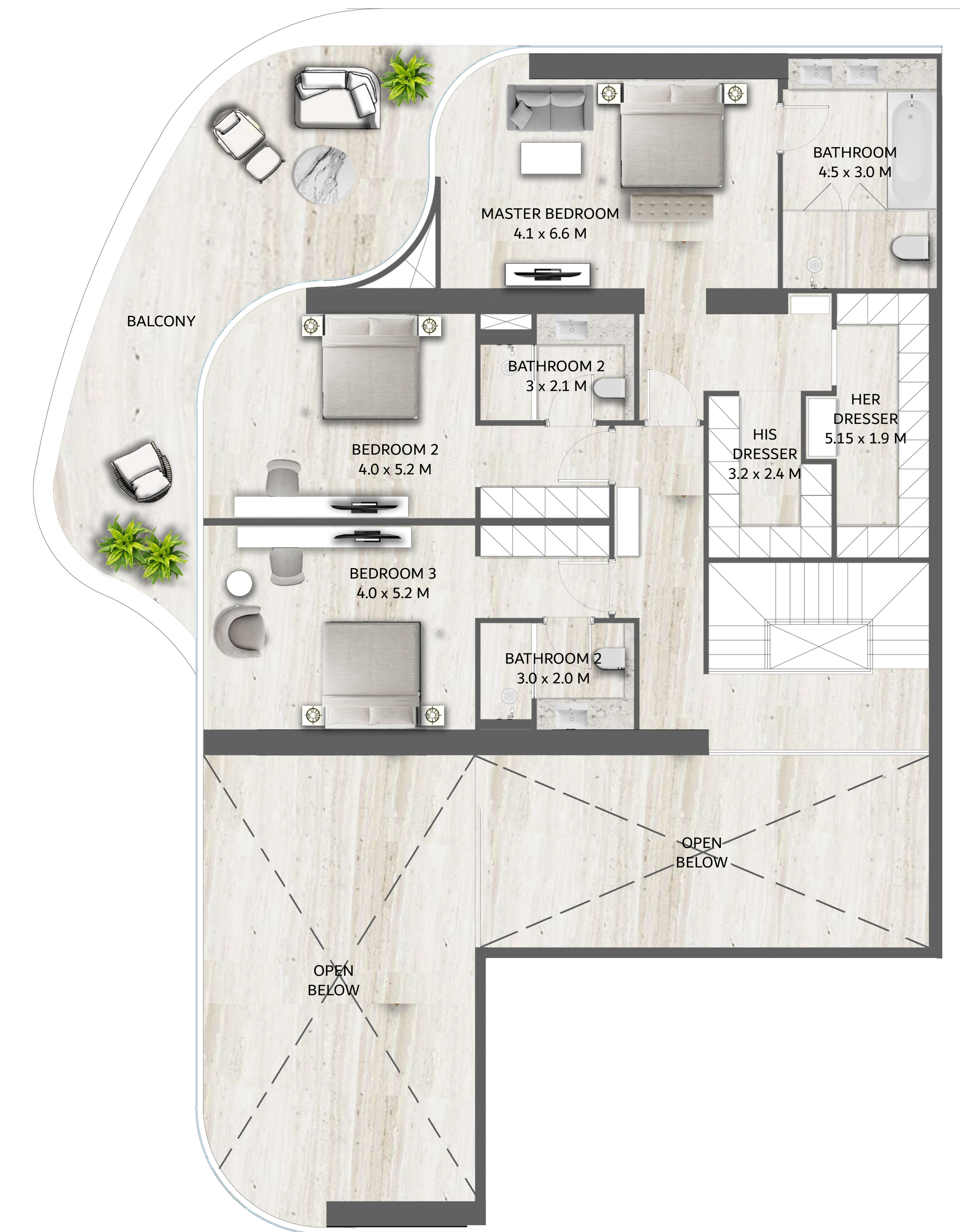
4 BEDROOM DUPLEX

SUITE AREA	437.41 M2	4,708.00 SQFT
BALCONY AREA	126.61 M2	1,363.00 SQFT
TOTAL SELLABLE AREA	564.02 M2	6,071.00 SQFT

KEYPLAN (GROUND FLOOR - 2ND - 4TH - 6TH - 8TH)



LOWER LEVEL



UPPER LEVEL

FLOOR PLAN 1. All dimensions are in imperial and metric, and measured from finish to finish excluding construction tolerances. 2. All materials, dimensions, and drawings are approximate only. 3. Information is subject to change without notice, at developer's absolute discretion. 4. Actual area may vary from the stated area. 5. Drawings not to scale. 6. All images used are for illustrative purposes only and do not represent the actual size, features, specifications, fittings, and furnishings. 7. The developer reserves the right to make revisions / alterations, at it's absolute discretion, without any liability whatsoever.

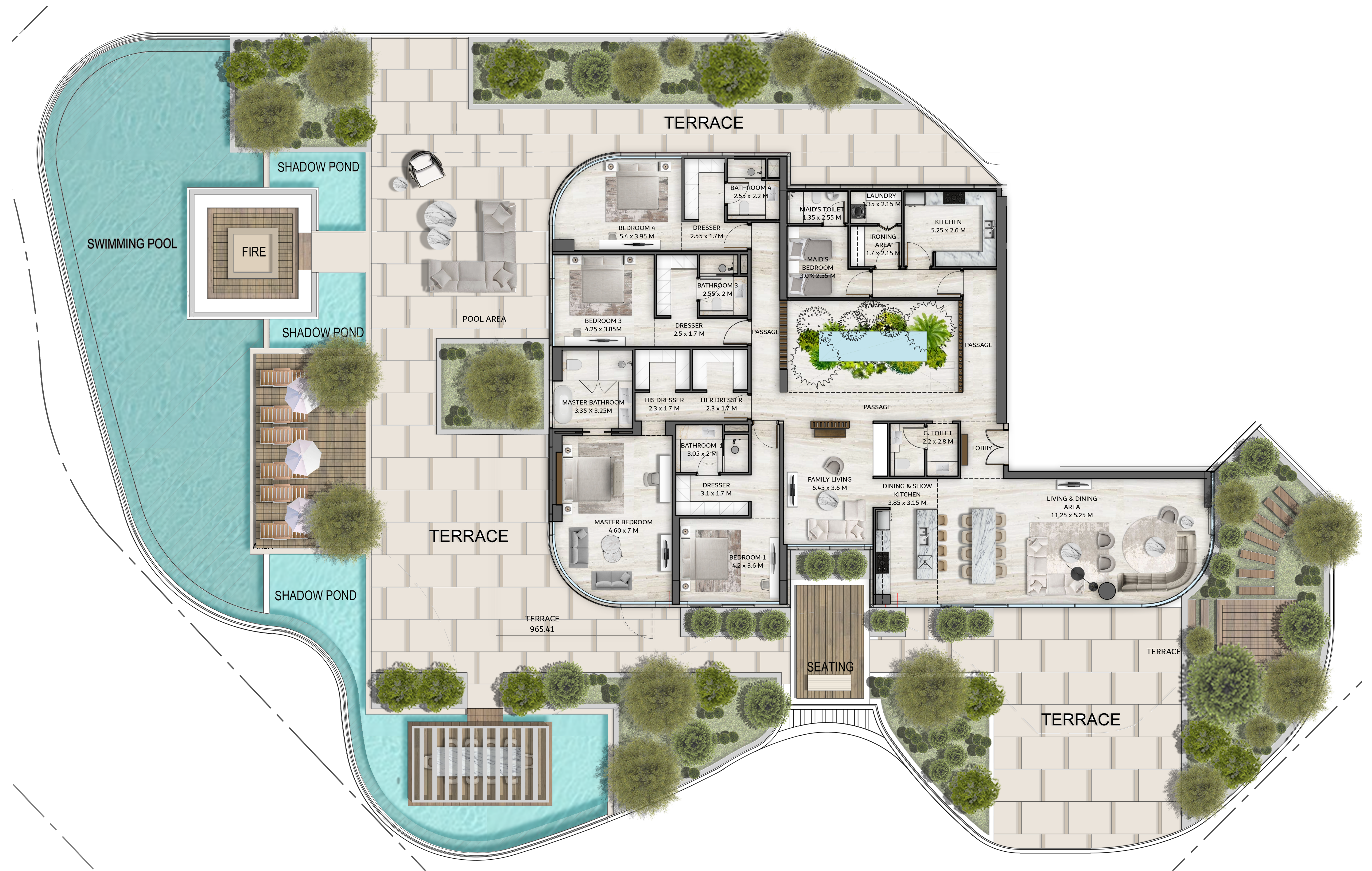
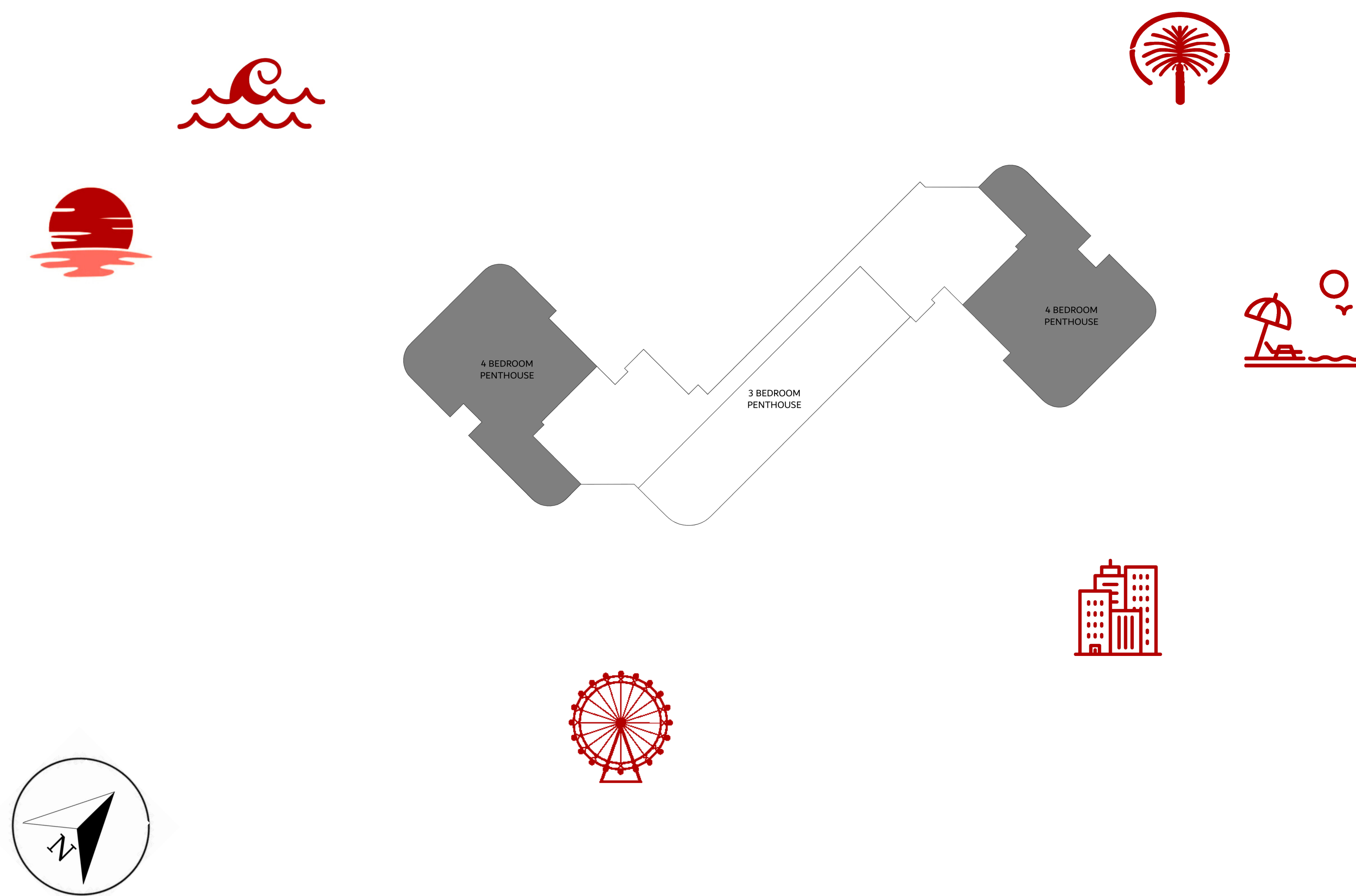
SLS

RESIDENCES
THE PALM DUBAI

4 BEDROOM PENTHOUSE

SUITE AREA	344.74 M2	3,711.00 SQFT
BALCONY AREA	952.36 M2	10,251.00 SQFT
TOTAL SELLABLE AREA	1297.10 M2	13,962.00 SQFT

KEYPLAN (ROOF FLOOR)



FLOOR PLAN 1. All dimensions are in imperial and metric, and measured from finish to finish excluding construction tolerances. 2. All materials, dimensions, and drawings are approximate only. 3. Information is subject to change without notice, at developer's absolute discretion. 4. Actual area may vary from the stated area. 5. Drawings not to scale. 6. All images used are for illustrative purposes only and do not represent the actual size, features, specifications, fittings, and furnishings. 7. The developer reserves the right to make revisions / alterations, at it's absolute discretion, without any liability whatsoever.